



Thermals

Newsletter of the Rocky Mountain Soaring Association

April 2006

AMA Chartered Club 1245

Volume XXX Number 4

President's Message Jim Monaco

It has been a busy time for me since the SWC. I have not had much time to fly - I hope you all are getting out. I did get my Supra going, and Byron did a great job building it for me. I only have a couple of sessions on it, but it is great so far. It is very good at the light lift and seems to retain its energy very well. I see this best in two places - moving upwind, even in pretty stiff wind is quite good, the other place I notice is on landing. It slows down VERY well, almost like an Extreme. The main difference is that when you lose your energy with the Extreme, you can't get going again. With the Supra, you can slow down real nice with the flaps, but when you take them back out, you get going again pretty quickly, you don't fall out of the sky.

Steve Suntken built a beautiful frequency board at the field, be sure to thank him, and use it appropriately.

The weather has not cooperated for the March contest; we were snowed out one weekend and blown out by the wind the next. At this point the contest is cancelled, we can consider running another makeup if we find a suitable schedule and available CD. The April contest is coming up next Sunday, be sure to try to make it out.

If you have not renewed, this is likely your last newsletter. It's easy to renew - simply go to the website and fill in the form; you can by mail or PayPal! <http://www.rmsadenver.com>

See you at the field

Jim Monaco

US F3J Team Manager 2006

8TH ANNUAL RMSA PRO/AM REPORT

I was pretty disappointed with the turnout for the Pro/Am. We did not have a single Amateur show up! We had a bunch of experienced pilots though, so we randomly split up into teams and had fun anyway

Next Meeting:

The details of the April Club meeting with the date, time and contents will be sent out in another email on Monday. A meeting room has yet to be confirmed

MARCH OPEN CONTEST RESULTS

Unfortunately the weather didn't co-operate for our first open contest of the year.

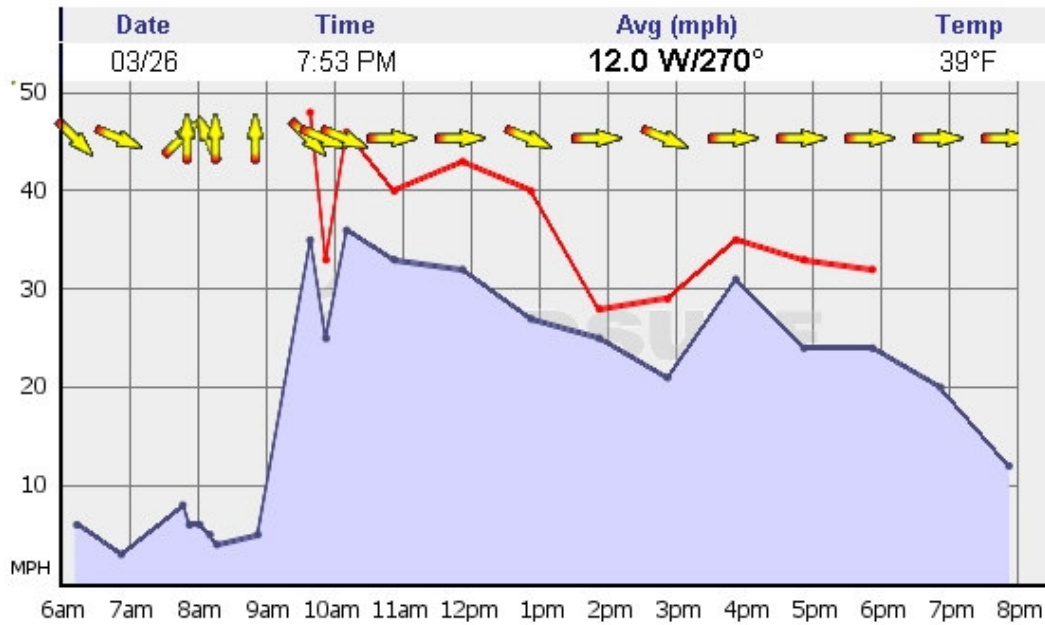
On March 19th there was cold and snow

On March 26 the wind came up very strong!

In fact here is a chart of actual measured winds at DIA that day. The blue is average speed and the red is gust value. These can be found at

<http://www.iwindsurf.com/windandwhere.iws?regionID=135&siteID=1082>

[Home](#) : [xt_USA](#) : [CO- Colorado](#) : [Denver Intl.](#) : Current Wind



For Sale

Two F3J models for sale. Both are in excellent condition with no damage. Both models were constructed by Byron Blakeslee.

1. Hobby Club Lazurite. White/Violet. 67 oz. \$995
2. Fazer. Yellow/black. 77 oz. See skipmillermodeled.com. \$1450

New, never flown, ready to fly Blaster DLG built by Lenny Keer. Complete with receiver, battery and servos. \$500

Ready to fly AVA complete with servos, skeg, battery and skeg. \$850.

Call Tom Gressman at 303-246-6151 for details of any of the above models

Wanted

Looking for 'open-class' composite glider between \$400-\$600. Can have some damage
Contact Ryan O'Hara <rydawgpossie@comcast.net>

Found

A Doggy (frisbee) Disc was found at the field. Looks like it may have been used for someone's landing spot. If not claimed Freedom thanks you for the new toy. –Contact Steve Suntken <flyingdogtwo@cs.com>

Rocky Mountain Soaring Association - 2006

RENEWAL _____ **NEW MEMBER** _____ **SPONSOR** _____

Please complete the following information for our records:

Family Memberships - Please make and complete a copy for EACH flying family member!

Name : _____ Need name badge? Yes

Address: _____ Year Joined RMSA: _____

_____ Home Phone: _____

_____ Work Phone: _____

AMA #: _____ AMA Contest Director? Yes No

AMA Class Open Youth Family Birth Date: ___/___/___

LSF #: _____ LSF LEVEL: ___ NSS #: _____ E-Mail: _____

RMSA Membership Class Senior Only Senior W/Family Associate Family
(Note - Senior W/Family receive THERMALS - other Family members check Family Box)

Non-Flying Family members: _____

RMSA Competition Class Novice Sportsman Master

RMSA Offices Held _____

----- **MODELS OWNED** -----

PLANE **SPAN** **COLOR** (Top,Bott.,Fuse) **CLASS** (Open,HLG,Std..) **FREQUENCY**

Interests: Sports Flying T/D contests HLG Contests NSS Soar-ins F3J
F3B X-C contests Slope contests Other _____

Past Achievements: _____

Dues: \$ 7.50 New Member Initiation Fee
 \$ 5.00 Junior - under 17
 \$ 25.00 Senior - individual 17 and over
 \$ 30.00 Family - any number (same address)
 \$ 8.00 Associate (newsletter only)

Make checks payable to RMSA

Comments and suggestions are ENCOURAGED! Please include these with your form!

REMEMBER TO SIGN THE FIELD RULES!!!

Please send to: **RMSA**
 % Bob Rice
 1123 S. Oakland St.
 Aurora, CO 80012

ROCKY MOUNTAIN SOARING ASSOCIATION FIELD RULES

1. The sod farm operations take precedence over **ALL** activities. We use the field at the convenience of the owner.
2. All members will follow **ALL** instructions from **ANY** sod farm personnel without question.
3. When sod farm operations are occurring during a flying session it is **OUR** responsibility to ensure that we will not interfere with operations. If it is unclear as to what is happening or where they intend to mow or work try to talk to workers or management and always move equipment or vacate the premises if necessary. Some workers do not speak very good English – in that case you must make every effort to avoid conflict or interference with operations.
4. Park only in the designated parking areas Do not park on grass, dirt or roads.
5. Avoid setting up on newly seeded areas or young grassy areas. The nice grassy areas are better to land on anyway!
6. Establish a frequency control pole and tag system! Frequency control is to be in effect at all times!! All members will post their frequency control tags on the pole and if there are conflicts, please exercise safety sense as well as share the flight time.
7. Parking and pit areas should be as condensed as possible for the safety of launch and landing.
8. Establish flight line areas for winch launch, high start launch, and hand launch that are separate for the sake of launch, flight & landing safety.
9. Flying over the parking/pit areas at less than 30 feet is prohibited. Doing so in competition **WILL** result in a zero flight score and during R/R flying a disciplinary action by the club.
10. No aerobatics or speed runs over the parking/pit/Launch/Landing zones.
11. Do not launch if a plane is circling in a launch zone: vacate the launch zone as soon as possible if someone is waiting to launch.
12. When entering a thermal occupied by other aircraft, enter in the same direction as the first aircraft
13. Landing aircraft have the right of way!
14. In the event of no mechanical retriever, please shag your own chute/line for the flight
15. Please share the usage of club equipment so that all have equal flight time.
16. Please be courteous and helpful to your fellow flyers as well as informative to all guests/spectators. Enjoy yourself and others!!
17. Absolutely no debris or trash is to be left on the field! Please take it home with you for disposal.
18. Make sure that your plane and electronics are airworthy before each flight. Exercise good safety sense in your flight
19. The aircraft will have an identification name/address or AMA number on or in the model in case of loss.
20. You **MUST** tag your winch/high start spikes or stakes with fluorescent tape so they are easily spotted on the field by all concerned. Members may be fined \$10 for each stake or nail not so marked. Previous damage to sod farm equipment from spikes left in the ground have made this rule **EXTREMELY** important.
21. Absolutely no alcoholic beverages will be consumed, prior to or during participation in any model event on the flying field.

I understand and will comply with all RMSA field rules:

Signature

2006 RMSA Contest/Event Calendar

Date	Type	CD	Name/Notes
January 21	Combo (PPSS)	Joel Zellmer	Fun Fly
February 7	RMSA Meeting		
February 11-12			SWC - Phoenix
February 26	Combo (PPSS)	Bob Avery	Snow Fly
March 5	Pro/Am	Jim Monaco	
March 7	RMSA Meeting	Jim Monaco	
March 19	Open*	Mike Verzuh	
March 25	Combo (PPSS)	Chris Keller	March Madness
April 4	RMSA Meeting		
April 9	Open*	Don Ingram	
April 23	Combo (PPSS)	Mike Fritz	Humps and Bumps
May 2	RMSA Meeting		
May 7	Open*	Bob Moffett	
May 13	HLG**	John Kappus	SATURDAY
May 20	Electric	John Read	Watts O Fun
May 27-28	F3J in the Rockies*	Jim Monaco	
June 3-4			IHLG - California Event
June 6	RMSA Meeting		
June 11	Open* +2m + RES	Dr. Dan	Combination event
June 17	F5J	Steve Suntken	Electric - SATURDAY
June 24	HLG**	John Kappus	Saturday
June 25	Combo (PPSS)	Dave Kurth	Memorial
July 5	RMSA Meeting		
July 9	Open*	Mike Verzuh	F3J with winches
July 16	HLG**	John Kappus	
July 21-28			Soaring NATS - Muncie ID
July 22	Combo (PPSS)	Greg Tarcza	Height O' the Season
July 28-Aug 5	F3J WC		Martin Slovakia
August 1	RMSA Meeting		
August 13	Open*	Steve Suntken	F3J with winches
August 19	Combo (PPSS)	Greg Tarcza	Howling Coyote (night fly)
August 20	HLG**	John Kappus	
August 26	F5J	Steve Suntken	Electric -SATURDAY
September 5	RMSA Meeting		
September 10	Open*	Bob Rice	Colorado Challenge Cup
September 30	Scienturfic Appreciation Day		Also Family Day - SATURDAY
Sept. 22-24	MoM		Masters of Soaring (Muncie)
September 24	Combo (PPSS)	Bob Avery	Soar Bash
October 1	HLG**	John Kappus	
October 7-8			Visalia Fall Fest
October 3	RMSA Meeting		
October 15	Open*	Shannon Bingham	
October 21	Combo (PPSS)	Joel Zellmer	Witches Brew
November 7	RMSA Meeting		
November 12	Open*	Jim Monaco	
November 19	Combo (PPSS)	John Read	Turkey Shoot
December 3	RMSA Banquet		

*Club Open points contest (Best 6 Scores)

**Club HLG points contest (Best 3 including the PPSS HLG event)

Italics indicates PPSS events held at their location in COS



2006 Board Members

President:	Jim Monaco	(303) 464-9895	JimMonaco@earthlink.net
Vice President:	Mike Verzuh	(970) 532-0638	mailto:mike@verzuh.com
Secretary:	Bob Rice	(303) 745-5629	mailto:brice@p2es.com
Treasurer:	John Pearson	(303) 306-6800	mailto:JTP1006@earthlink.net
Past President:	Dr. Danny Williams	(303) 903-2291	drdandc@juno.com

Member Support

<http://www.rmsadenver.com>

Chief

Instructor: Mike Verzuh (970) 532-0638 (303) 505-9488 (Pager)

Librarian: Tracy Cochran (303) 934-8838 Tcochran@idcomm.com

Newsletter: Tony O'Hara (303) 948-2576 tonyoco@peoplepc.com

Winch Master

Mike Verzuh (970) 532-0638 <mailto:mike@verzuh.com>

Battery Masters

Bob Lewan

Skip Miller

Jim Monaco

Cody and Hal

Remington

Joseph and Jim

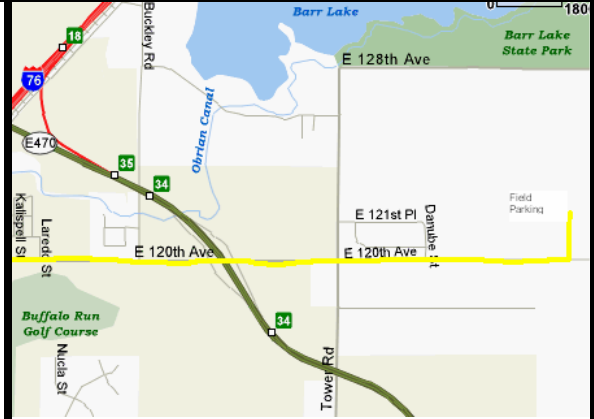
Newcomb

Steve Suntken (Temp)

Mike Verzuh

For Winch Use:

If you are interested in using a club winch please contact Mike for the first time, and I will insure you have all the details for trailer access. Also if you are a new member and have not had a winch operation and safety briefing we will coordinate that.



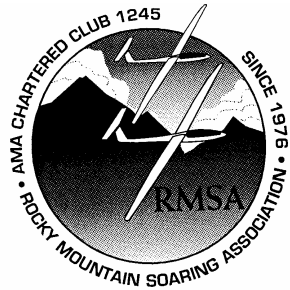
Directions to Field

Take I-76 to exit 16. Turn left and follow the frontage road to the stoplight and turn east onto 120th eastbound towards the airport.

Take 120th East to Tower Rd. Take 120th east of Tower Rd about 3/4 miles.

We fly on the North side of 120th which is the SE quadrant of the sod farm.

Flying for RMSA members and accompanied guests only.



Rocky Mountain Soaring Association
1123 S. Oakland St
Aurora CO 80012

First Class Mail

Forwarding Address Requested